

4-POST OPEN FRAME RACKS

SRK SECURITY SERIES

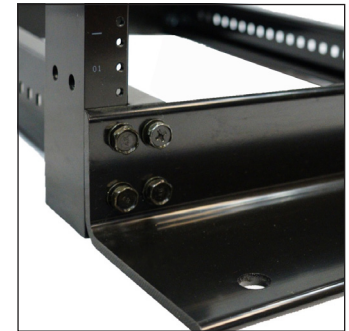
SRK Security Series Open Frame Racks are designed for use in telecom rooms, small wiring closets and data centers for managing network equipment. These simple but tough racks can hold a variety of items designed to be rack-mounted, including shelves, patch panels, cable management trays, keyboard trays and network switches. The 4-Post version combines the mounting security of a cabinet with the accessibility of a rack. They support deeper, heavier network equipment than 2-Post Open Frame Racks and can be ganged with 2-Post Open Frame Racks or other 4-Post Open Frame Racks to expand existing systems.



Part Number	Rack Units	Overall Dimensions H x W x D in. (mm)
CC38-4CH-51475-A	38U	71.46" x 20.23" x 29.53" (1815 x 514 x 750)
CC45-4CH-51475-A	45U	83.71" x 20.23" x 29.53" (2126 x 514 x 750)



Optional Cable Tray Top with Waterfall Dropout



Heavy-duty Steel Base with Holes for Floor Mounting

FEATURES

- Tapped 12-24 mounting holes front and rear, with numbered spaces.
- Channels constructed from heavy duty aluminum extrusion.
- Steel base includes holes for securing the floor.
- Pack of mounting hardware included.
- Vertical cable managers and other accessories available.
- Ships flat to save space. Assembly required.
- Package includes all hardware and assembly instructions.

PAINT/FINISH

Textured black powder

STATIC LOAD RATING

800 lbs. [363 kg.]

INDUSTRY STANDARDS

EIA 310-D

UL Listed



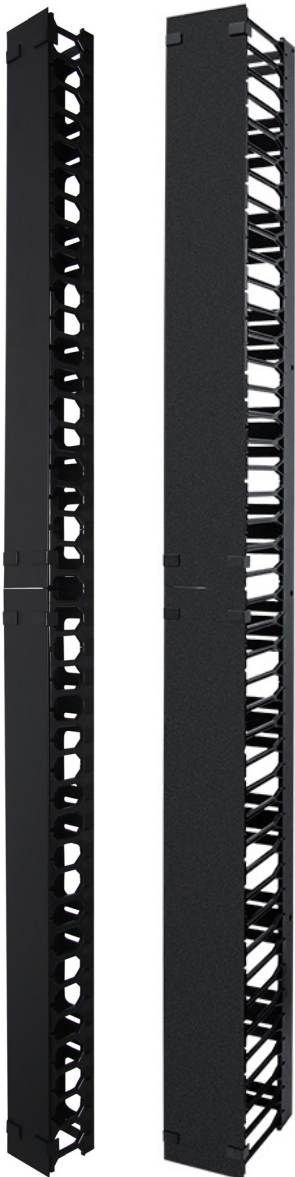
4-POST OPEN FRAME RACKS

VERTICAL CABLE MANAGERS

Available in 2 widths, 4" wide and 6" wide, these cable managers mount to the sides of 2-Post or 4-Post open frame racks to assist with cable management.

4" Finger Part Number	Rack Units	Overall Dimensions H x W in. (mm)
SRE04-36-A	36U	63.00" x 3.20" (1600 x 81)
SRE04-44-A	44U	77.00" x 3.20" (1956 x 81)

6" Finger Part Number	Rack Units	Overall Dimensions H x W in. (mm)
SRE05-36-A	36U	63.00" x 5.50" (1600 x 141)
SRE05-44-A	44U	77.00" x 5.50" (1956 x 141)

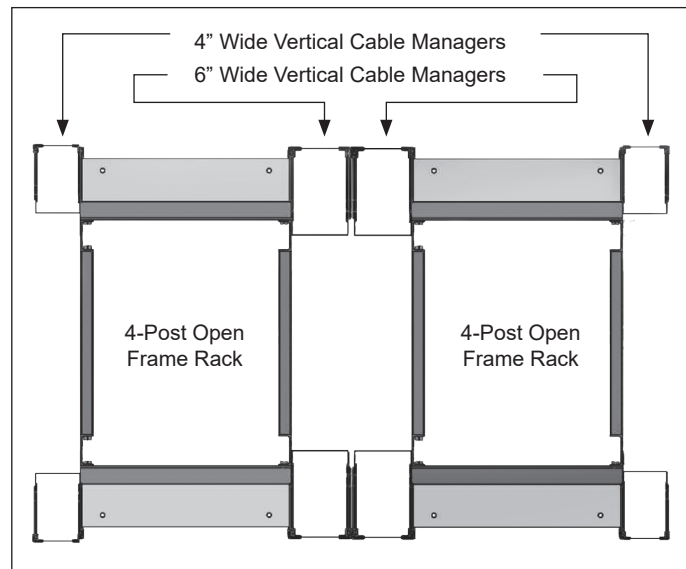


4" Wide

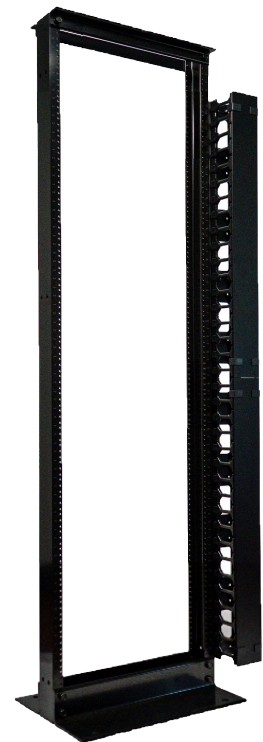
6" Wide



Detail View of Fingers and Door.



Example of Vertical Cable Managers Mounted to Open Frame Racks



©2023 SharkRack. All rights reserved. SharkRack™ and the SharkRack logo are trademarks or registered trademarks of SharkRack. All other names and logos referred to are trade names, trademarks, or registered trademarks of their respective owners. While every precaution has been taken to ensure accuracy and completeness, SharkRack assumes no responsibility and disclaims all liability for damages resulting from use of this information or for any errors or omissions. Specifications, rebates, and other promotional offers are subject to change at SharkRack's sole discretion upon notice.

