

SWING-OUT WALL-MOUNT CABINETS

SRK WALL-MOUNT SERIES

The SRK Wall-Mount Series Cabinets offer reliability, value, and versatility in organizing and securing your 19" standard rack-mount servers and networking equipment. These swing-out cabinets feature a hinged back allowing the cabinet to swing open for easy access to the back section solving the everyday problems technicians have while installing and managing the immense amount of cabling that is common with data and telecommunication equipment. These cabinets come assembled with rails that are field adjustable - square or tapped 12-24, multiple cable management points, a built-in area for a power strip, brushed cable entry, and laser knockouts for adding fans or additional cable entry, lockable side panels, and a locking glass door.



FEATURES

- Available in multiple heights including: 2ft., 3ft., and 4ft.
- Three depths: 12" (300mm), 22" (550mm), and 30" (750mm).
- Removable side panels make for easy moves, adds, and changes (MAC's).
- Easily integrates with accessories such as power, cooling, and cable management.
- The frame can be separated from the swing-out section for faster set up or maintenance.
- Window door comes standard and is field reversible for left or right swing.
- Lockable side panels for added security.
- Square or tapped 12-24 rails - adjustable front to rear.

PAINT/FINISH

Textured black powder (S)

LOAD RATING

Varies per size. Weight capacity is dependent on secure mounting into proper structure.

INDUSTRY STANDARDS

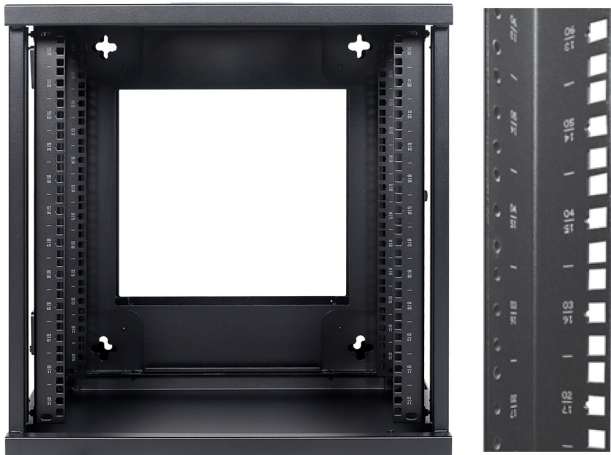
EIA 310-D



SWING-OUT WALL-MOUNT CABINETS

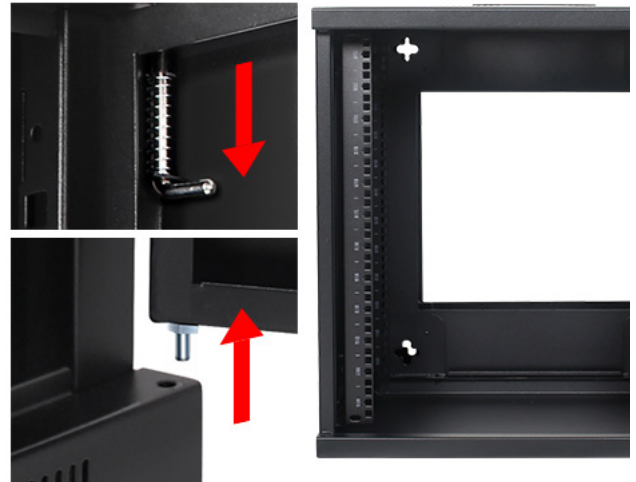
MOUNTING RAILS

Adjustable front to rear.
Field reversible square or tapped 12-24 hole.



LIFT OFF DOORS

Quick release. Easy on and off. Field reversible.
140° of rotation. Lock included.



INTERGRATED CABLE/AIRFLOW MANAGEMENT

The top has integrated cable entry/exit points and venting provisions for the optional fan kit.



SWING-OUT WALL-MOUNT CABINETS



PART NUMBERS

These cabinets come fully assembled and include: frame, window front door, side panels, two pair of reversible mounting rails, and swing-out back panel.

12" Deep Part Number	Rack Units	Overall Dimensions H x W x D* in. (mm)	Maximum Usable Depth in. (mm)	Weight Capacity lbs. (kg)
BG06-630-B1A	6U	13.78" x 23.32" x 11.81" (350 x 600 x 300)	9.5" (241)	135 (61)
BG09-630-B1A	9U	19.00" x 23.32" x 11.81" (480 x 600 x 300)	9.5" (241)	135 (61)
BG12-630-B1A	12U (3 ft)	24.38" x 23.32" x 11.81" (620 x 600 x 300)	9.5" (241)	250 (113)
BG15-630-B1A	15U	29.68" x 23.32" x 11.81" (750 x 600 x 300)	9.5" (241)	250 (113)
BG18-630-B1A	18U (4 ft)	34.82" x 23.32" x 11.81" (885 x 600 x 300)	9.5" (241)	300 (136)
BG27-630-B1A	27U (5 ft)	50.50" x 23.32" x 11.81" (1282 x 600 x 300)	9.5" (241)	400 (181)

22" Deep Part Number	Rack Units	Overall Dimensions H x W x D* in. (mm)	Maximum Usable Depth in. (mm)	Weight Capacity lbs. (kg)
BG06-655-B1A	6U	13.78" x 23.32" x 21.65" (350 x 600 x 550)	20.07" (510)	135 (61)
BG09-655-B1A	9U	19.00" x 23.32" x 21.65" (480 x 600 x 550)	20.07" (510)	135 (61)
BG12-655-B1A	12U (3 ft)	24.38" x 23.32" x 21.65" (620 x 600 x 550)	20.07" (510)	250 (113)
BG15-655-B1A	15U	29.68" x 23.32" x 21.65" (750 x 600 x 550)	20.07" (510)	250 (113)
BG18-655-B1A	18U (4 ft)	34.82" x 23.32" x 21.65" (885 x 600 x 550)	20.07" (510)	300 (136)
BG27-655-B1A	27U (5 ft)	50.50" x 23.32" x 21.65" (1282 x 600 x 550)	20.07" (510)	400 (181)

30" Deep Part Number	Rack Units	Overall Dimensions H x W x D* in. (mm)	Maximum Usable Depth in. (mm)	Weight Capacity lbs. (kg)
BG06-675-B1A	6U	13.78" x 23.32" x 29.53" (350 x 600 x 750)	27.95" (710)	135 (61)
BG09-675-B1A	9U	19.00" x 23.32" x 29.53" (480 x 600 x 750)	27.95" (710)	135 (61)
BG12-675-B1A	12U (3 ft)	24.38" x 23.32" x 29.53" (620 x 600 x 750)	27.95" (710)	250 (113)
BG15-675-B1A	15U	29.68" x 23.32" x 29.53" (750 x 600 x 750)	27.95" (710)	250 (113)
BG18-675-B1A	18U (4 ft)	34.82" x 23.32" x 29.53" (885 x 600 x 750)	27.95" (710)	300 (136)
BG27-675-B1A	27U (5 ft)	50.50" x 23.32" x 29.53" (1282 x 600 x 750)	27.95" (710)	400 (181)

*Depth includes swing-out back panel and front door.

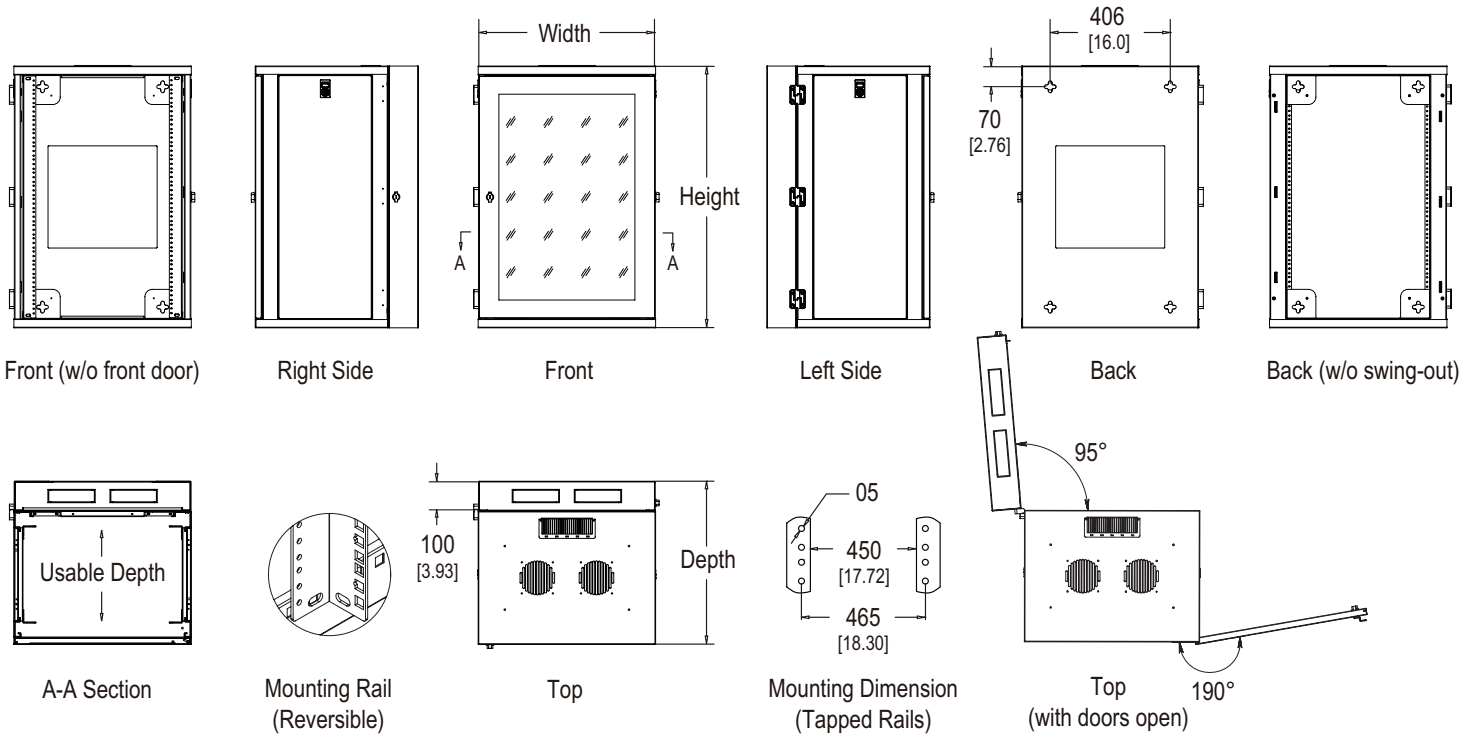
Optional Fan Part Number	Compatible With
LW-FAN-4IN-CBK	12" Deep Cabinet

Optional Fan Part Number	Compatible With
SCA-UCST-03-CBK	22" Deep Cabinet 30" Deep Cabinet



SWING-OUT WALL-MOUNT CABINETS

TECHNICAL SPECIFICATIONS



Three Depths 12" (300mm), 22" (550mm), and 30" (750mm)



Six Heights 6U, 9U, 12U, 15U, 18U, 27U

©2023 SharkRack. All rights reserved. SharkRack™ and the SharkRack logo are trademarks or registered trademarks of SharkRack. All other names and logos referred to are trade names, trademarks or registered trademarks of their respective owners. While every precaution has been taken to ensure accuracy and completeness here, SharkRack assumes no responsibility, and disclaims all liability, for damages resulting from use of this information or for any errors or omissions. Specifications, rebates and other promotional offers are subject to change at SharkRack's sole discretion upon notice.

